

GHG-JHS9-U Self-Opening Mini Damper Hinge (Under Mount)

Features

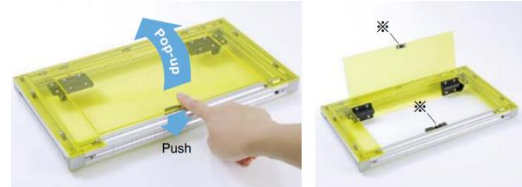
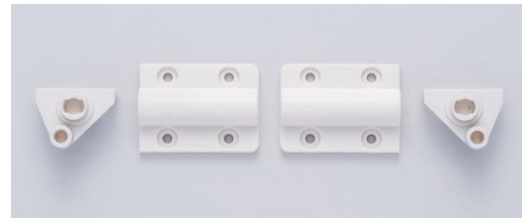
- Small damper hinge with self-opening function for top-opening lids
- Use of push latch together with hinges creates pop-up function of lid
- Inset type
- Opening speed is adjustable with a hex key
- Passed 50,000 life cycle test

Notes

- Operating temperature: 0°C ~ 40°C
- Sold in pairs
- Ensure spring unit is mounted on L side and damper unit mounted on R side of panel
- Ensure both hinge shafts are levelled and aligned during installation

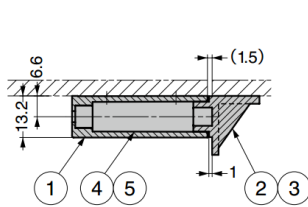
Recommended Screws

- Binding head screw M3, binding head tapping screw 3, etc.

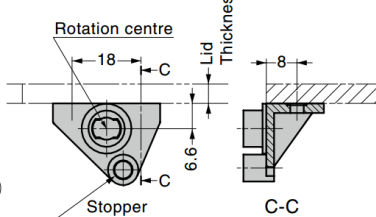


※ Optional push latch **GESN-195/BLK** to keep lid at closed position

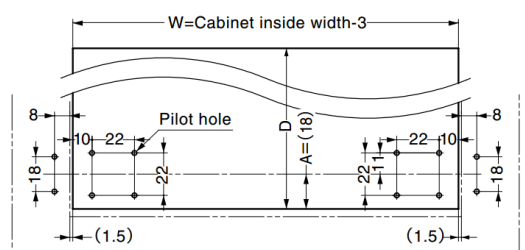
Front View Cross-section



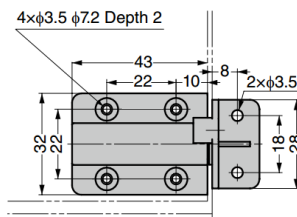
Installation Bracket



Cut Out Dimensions

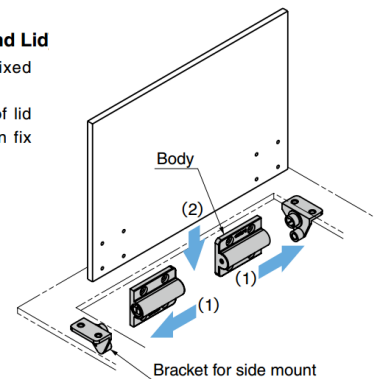


Bottom View



How to Install Body and Lid

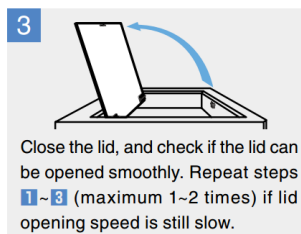
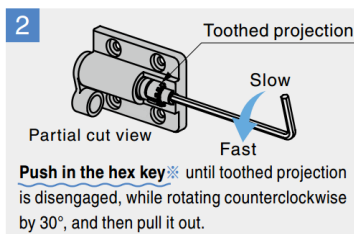
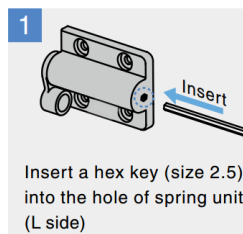
- (1) Insert the body into fixed bracket.
- (2) Align mounting holes of lid with the body, and then fix with screws.



No.	Part Name	Material	Colour
①	Body	POM	Black, White
②	Bracket R	PBT	
③	Bracket L		
④	Damper (R side)	POM	-
⑤	Spring Unit (L side)	Zinc Alloy (ZDC) /Stainless Steel	Chromate/-

Adjustment of Lid Opening Speed

When increasing lid opening speed



When decreasing lid opening speed (returning to the speed before adjustment)

Loosen the force following the hex key rotating clockwise.

※Make sure to rotate counterclockwise following pushing in the hex key and disengaging the projection. Forced rotation may cause damage.

Part No.	Colour	Opening Angle	Torque (per pair)	
GHG-JHS9-U-BL	Black	105°	0.027 ~ 0.043 N.m	0.28 ~ 0.44 kgf.cm
GHG-JHS9-U-WT	White			